





An exclusive range of fully finished homes
inspired by island living, where the spirit of
the Nile flows through every home

Nile House

The Nile House unfolds in a horizontal layout, embracing panoramic Nile views, reserved for visionaries who live with legacy, exclusivity, and prestige



Mountain view reserves the right to make minor alterations without prior notice. All numbers, renders, plans and visual materials, design, and facades are for demonstrative purposes and are subject to change



Nile House | Outdoor Terrace

Mountain view reserves the right to make minor alterations without prior notice. All numbers, renders, plans and visual materials, design, and facades are for demonstrative purposes and are subject to change



Nile House | Bedroom

Mountain view reserves the right to make minor alterations without prior notice. All numbers, renders, plans and visual materials, design, and facades are for demonstrative purposes and are subject to change

Nile House

TOTAL GROSS AREA | 1000SQM

6 Bedrooms

Ground Floor

Reception	12.80 m	X	7.00 m
Dining	7.80 m	X	7.00 m
Gallery	20.60 m	X	3.00 m
Kitchen	5.60 m	X	7.00 m
Storage	1.90 m	X	2.20 m
G. Toilet	1.90 m	X	1.10 m
Vanity	1.90 m	X	2.30 m
Bridge	5.20 m	X	3.00 m
Lobby	4.60 m	X	1.80 m
Living (Green Room)	4.00 m	X	6.55 m
Living	4.20 m	X	4.00 m
Kitchenette	4.00 m	X	2.10 m
Maid	1.70 m	X	2.70 m
Maid Bath	1.20 m	X	1.70 m
Bridge	5.20 m	X	3.00 m
Lobby	4.00 m	X	1.80 m
M. Bedroom 01	4.00 m	X	6.55 m
M. Dressing 01	3.90 m	X	4.00 m
M. Bath 01	2.40 m	X	1.80 m
Jacuzzi	4.00 m	X	4.20 m
Shower	1.50 m	X	1.80 m
Bureau Room	7.00 m	X	7.60 m
Foyer	5.00 m	X	7.00 m
Driver	1.80 m	X	2.70 m
D. Bath	1.20 m	X	1.80 m



Mountain view reserves the right to make minor alterations without prior notice. All numbers, renders, plans and visual materials, design, and facades are for demonstrative purposes and are subject to change

Nile House

TOTAL GROSS AREA | 1000SQM

6 Bedrooms

First Floor

Bridge	5.20 m	X	3.00 m
Lobby	4.00 m	X	1.80 m
M. Bedroom 02	4.00 m	X	6.55 m
M. Dressing 02	3.90 m	X	4.00 m
M. Bath 02	2.40 m	X	1.80 m
Jacuzzi	4.00 m	X	4.20 m
Shower	1.50 m	X	1.80 m
M. Bedroom 03	7.00 m	X	3.60 m
M. Dressing 03	1.90 m	X	2.70 m
M. Bath 03	3.00 m	X	1.90 m
Terrace	0.60 m	X	2.40 m
M. Bedroom 04	7.00 m	X	3.60 m
M. Dressing 04	1.90 m	X	2.70 m
M. Bath 04	3.00 m	X	1.90 m
Bridge	2.60 m	X	3.00 m
M. Bedroom 05	7.00 m	X	3.60 m
M. Dressing 05	1.90 m	X	2.70 m
M. Bath 05	3.00 m	X	1.90 m
Terrace	0.60 m	X	2.40 m
M. Bedroom 06	7.00 m	X	3.60 m
M. Bedroom 06	1.90 m	X	2.70 m
M. Bath 06	3.00 m	X	1.90 m



Mountain view reserves the right to make minor alterations without prior notice. All numbers, renders, plans and visual materials, design, and facades are for demonstrative purposes and are subject to change

Nile House

TOTAL GROSS AREA | 800 SQM

5 Bedrooms

Ground Floor

Entrance Lobby	5.00 m	x	5.00 m
Reception	10.50 m	x	9.20 m
Dining	3.60 m	x	5.70 m
Gourmet Kitchen	2.80 m	x	5.70 m
Hard Kitchen	4.00 m	x	5.70 m
Powder Room	2.00 m	x	1.80 m
G. Toilet	3.40 m	x	1.60 m
Maid Room	3.30 m	x	2.60 m
Maid Toiler	1.90 m	x	1.20 m
Storage	3.20 m	x	1.60 m
Driver Room	1.90 m	x	2.40 m
Driver Toilet	1.20 m	x	1.60 m
M. Bedroom 01	4.50 m	x	5.80 m
M. Bath 01	4.50 m	x	2.45 m
M. Dressing 01	4.50 m	x	2.50 m
M. Dressing 02	2.50 m	x	2.40 m
Home Office	4.20 m	x	8.30 m
Toilet	2.50 m	x	1.60 m



Mountain view reserves the right to make minor alterations without prior notice. All numbers, renders, plans and visual materials, design, and facades are for demonstrative purposes and are subject to change

Nile House

TOTAL GROSS AREA | 800 SQM

5 Bedrooms

First Floor

Master Bedroom 02	6.00 m	x	5.30 m
Master Dressing 02	3.00 m	x	2.10 m
Master Bath 02	3.00 m	x	2.00 m
Terrace 01	6.40 m	x	5.70 m
Living Room	4.90 m	x	4.90 m
Master Bedroom 03	5.90 m	x	4.20 m
M. Bath 03	2.30 m	x	2.00 m
M. Dressing 03	2.30 m	x	2.10 m
Master Bedroom 04	4.10 m	x	3.90 m
M. Bath 04	2.50 m	x	2.20 m
M. Dressing 04	2.50 m	x	1.80 m
Terrace 02	6.90 m	x	1.60 m
Master Bedroom 05	4.10 m	x	3.90 m
M. Bath 05	2.50 m	x	2.20 m
M. Dressing 05	2.50 m	x	1.80 m
Kitchenette	2.00 m	x	1.80 m



Mountain view reserves the right to make minor alterations without prior notice. All numbers, renders, plans and visual materials, design, and facades are for demonstrative purposes and are subject to change

Nile House

TOTAL GROSS AREA | 800 SQM

5 Bedrooms

Roof Floor

Living Room	5.00 m	x	7.70 m
Kitchenette	2.80 m	x	5.00 m
Toilet	1.80 m	x	2.00 m
Roof Terrace	10.50 m	x	5.10 m



Mountain view reserves the right to make minor alterations without prior notice. All numbers, renders, plans and visual materials, design, and facades are for demonstrative purposes and are subject to change



Mountain view reserves the right to make minor alterations without prior notice. All numbers, renders, plans and visual materials, design, and facades are for demonstrative purposes and are subject to change



Nile House - 450

Mountain view reserves the right to make minor alterations without prior notice. All numbers, renders, plans and visual materials, design, and facades are for demonstrative purposes and are subject to change

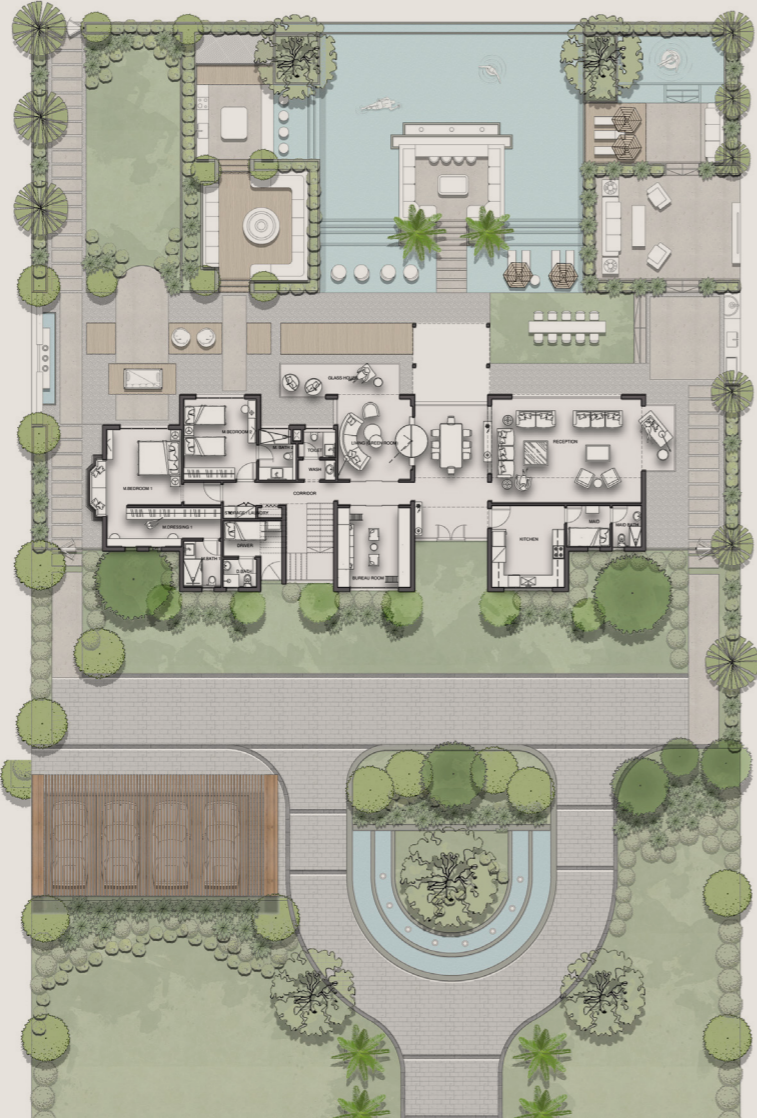
Nile House

TOTAL GROSS AREA | 450 SQM

5 Bedrooms

Ground Floor

Living (Green Room)	3.70 m	X	4.00 m
Reception	5.15 m	X	13.00 m
Kitchen	4.05 m	X	3.60 m
Maid Room	2.05 m	X	2.15 m
Maid Bath	1.45 m	X	2.05 m
Corridor	1.10 m	X	5.65 m
Bureau Room	3.95 m	X	3.60 m
Storage / Laundry	0.55 m	X	2.90 m
Driver Room	1.80 m	X	2.90 m
Driver Bath	1.40 m	X	1.65 m
Wash	1.00 m	X	1.85 m
Toilet	1.85 m	X	1.40 m
M. Bedroom 01	3.75 m	X	3.70 m
M. Dressing 01	5.65 m	X	1.95 m
M. Bath 01	2.30 m	X	1.85 m
M. Bedroom 02	4.00 m	X	3.60 m
M. Bath 02	2.50 m	X	1.85 m



Mountain view reserves the right to make minor alterations without prior notice. All numbers, renders, plans and visual materials, design, and facades are for demonstrative purposes and are subject to change

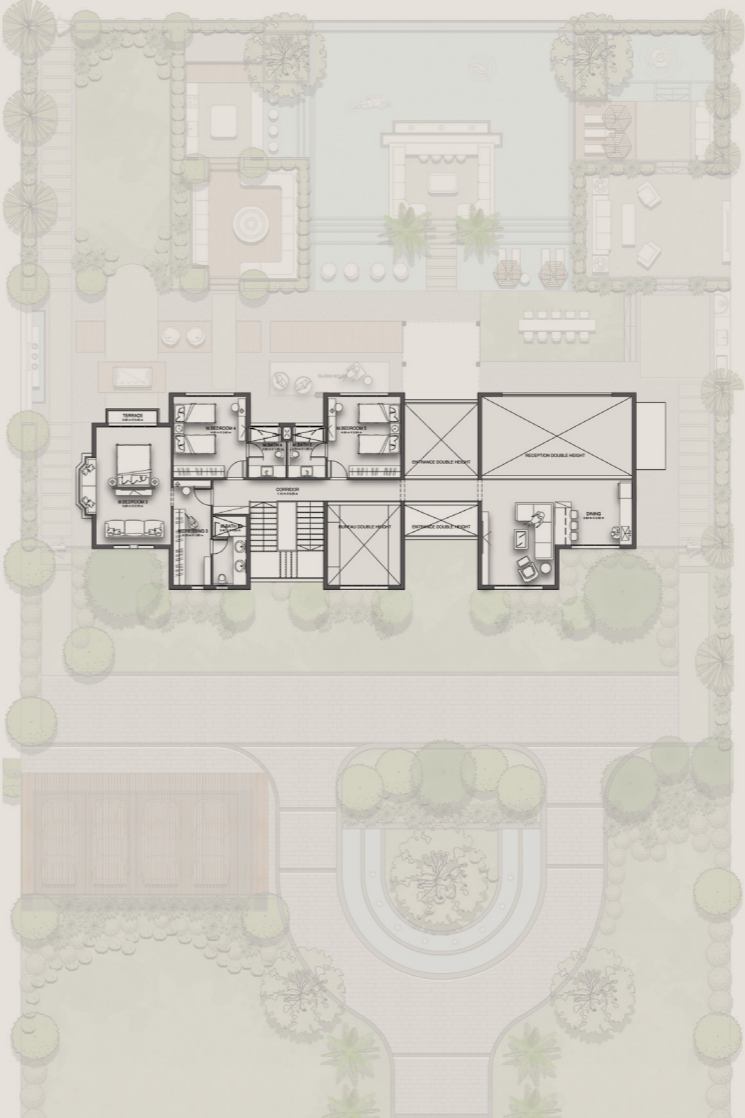
Nile House

TOTAL GROSS AREA | 450 SQM

5 Bedrooms

First Floor

Corridor	1.10 m	X	9.25 m
Living	5.20 m	X	3.60 m
Dining	3.80 m	X	3.20 m
M. Bedroom 03	5.80 m	X	3.70 m
M. Dressing 03	5.20 m	X	1.85 m
M. Bath 03	3.40 m	X	1.65 m
M. Bedroom 04	4.00 m	X	3.60 m
M. Bath 04	2.50 m	X	1.85 m
M. Bedroom 05	4.00 m	X	3.60 m
M. Bath 05	2.50 M	X	1.85 m



Mountain view reserves the right to make minor alterations without prior notice. All numbers, renders, plans and visual materials, design, and facades are for demonstrative purposes and are subject to change

One Storey

The One Storey flows with ease with its private Ground and pool, all facing the beauty of the Nile. It's a haven for those who embrace freedom, seeking to live life to its fullest.



Mountain view reserves the right to make minor alterations without prior notice. All numbers, renders, plans and visual materials, design, and facades are for demonstrative purposes and are subject to change.



One Storey

Mountain view reserves the right to make minor alterations without prior notice. All numbers, renders, plans and visual materials, design, and facades are for demonstrative purposes and are subject to change



One Storey | Reception

Mountain view reserves the right to make minor alterations without prior notice. All numbers, renders, plans and visual materials, design, and facades are for demonstrative purposes and are subject to change

One Storey

TOTAL GROSS AREA | 290 SQM

5 Bedrooms

Ground Floor

Reception	5.45 m	X	4.50 m
Kitchen	3.10 m	X	3.70 m
Dining	4.00 m	X	4.00 m
Maid Room	2.20 m	X	1.95 m
Maid Toilet	1.30 m	X	1.95 m
G. Toilet	2.30 m	X	1.10 m
Bedroom 01	4.10 m	X	3.60 m
Bath	1.90 m	X	3.15 m
Bedroom 02	4.20 m	X	3.60 m
M. Bedroom 01	4.10 m	X	3.60 m
M. Dressing 01	2.30 m	X	2.10 m
M. Bath 01	1.70 m	X	2.55 m



Mountain view reserves the right to make minor alterations without prior notice. All numbers, renders, plans and visual materials, design, and facades are for demonstrative purposes and are subject to change

One Storey

TOTAL GROSS AREA | 290 SQM

5 Bedrooms

First Floor

Living Room	4.60 m	X	3.10 m
Lobby	1.50 m	X	1.40 m
M. Bedroom 02	5.40 m	X	3.80 m
M. Dressing 02	1.90 m	X	3.45 m
M. Bath 02	5.40 m	X	2.15 m
M. Bedroom 03	3.70 m	X	3.60 m
M. Bath 03	2.00 m	X	2.20 m
Terrace	3.80 m	X	0.90 m
Roof Terrace	29.95 SQM		



Mountain view reserves the right to make minor alterations without prior notice. All numbers, renders, plans and visual materials, design, and facades are for demonstrative purposes and are subject to change

One Storey

TOTAL GROSS AREA | 245 SQM

4 Bedrooms

Ground Floor

Entrance	5.70 m	X	3.60 m
Reception	5.50 m	X	4.10 m
Dining	3.60 m	X	3.00 m
Kitchen	2.70 m	X	3.40 m
Guest Toilet	1.10 m	X	3.40 m
Maids Room	1.40 m	X	3.30 m
Maids Toilet	2.00 m	X	1.00 m
Bedroom 01	3.50 m	X	4.40 m
Bath 01	2.30 m	X	1.70 m
Bedroom 02	3.40 m	X	3.50 m
Bath 02	2.30 m	X	1.70 m



Mountain view reserves the right to make minor alterations without prior notice. All numbers, renders, plans and visual materials, design, and facades are for demonstrative purposes and are subject to change

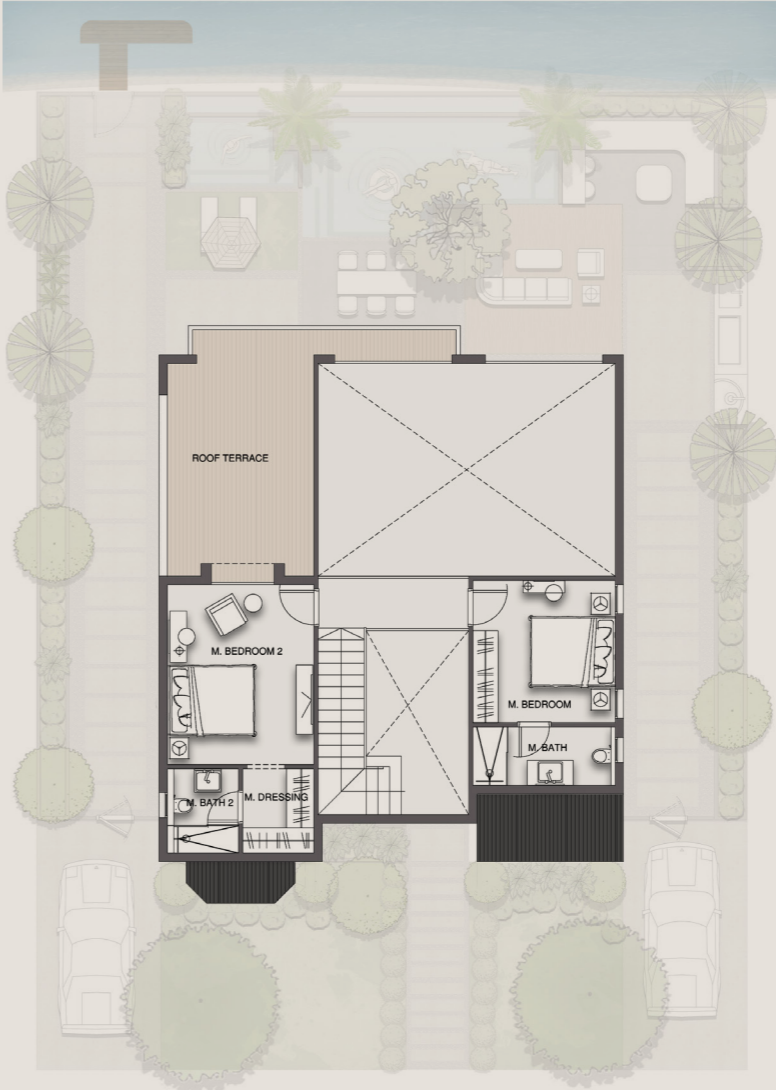
One Storey

TOTAL GROSS AREA | 245 SQM

4 Bedrooms

First Floor

M. Bedroom 01	4.30 m	X	3.50 m
M. Dressing 01	2.00 m	X	1.70 m
M. Bath 01	2.00 m	X	1.70 m
M. Bedroom 02	3.40 m	X	3.40 m
M. Dressing 02	3.40 m	X	3.40 m
M. Bath 02	3.40 m	X	1.40 m
Roof Terrace	5.20 m	X	3.60 m



Mountain view reserves the right to make minor alterations without prior notice. All numbers, renders, plans and visual materials, design, and facades are for demonstrative purposes and are subject to change

One Storey Nile Edition



Mountain view reserves the right to make minor alterations without prior notice. All numbers, renders, plans and visual materials, design, and facades are for demonstrative purposes and are subject to change

One Storey - Nile Edition

TOTAL GROSS AREA | 165 SQM

3 Bedrooms

Ground Floor

Reception	5.00 m	X	3.90 m
Kitchen & Dining	4.60 m	X	3.40 m
Toilet	1.95 m	X	1.10 m
M. Bedroom 01	3.40 m	X	3.40 m
M. Dressing 01	2.20 m	X	1.50 m
M. Bath 01	2.20 m	X	1.60 m



Mountain view reserves the right to make minor alterations without prior notice. All numbers, renders, plans and visual materials, design, and facades are for demonstrative purposes and are subject to change

One Storey - Nile Edition

TOTAL GROSS AREA | 165 SQM

3 Bedrooms

First Floor

Living Room	3.55 m	X	3.20 m
M. Bedroom 02	3.50 m	X	3.40 m
M. Dressing 02	1.80 m	X	1.60 m
M. Bath 02	2.00 m	X	1.60 m
M. Bedroom 03	3.40 m	X	3.40 m
M. Dressing 03	1.30 m	X	1.60 m
M. Bath 03	1.80 m	X	1.60 m
Terrace	2.80 m	X	1.20 m



Mountain view reserves the right to make minor alterations without prior notice. All numbers, renders, plans and visual materials, design, and facades are for demonstrative purposes and are subject to change

River Villa



Mountain view reserves the right to make minor alterations without prior notice. All numbers, renders, plans and visual materials, design, and facades are for demonstrative purposes and are subject to change

River Villa

TOTAL GROSS AREA | 400 SQM

5 Bedrooms

Ground Floor

Entrance	2.05 m	X	1.75 m
Lobby 01	1.65 m	X	1.65 m
Lobby 02	2.45 m	X	2.05 m
Lobby 03	1.85 m	X	1.45 m
Maid Room	3.15 m	X	2.95 m
Maid Toilet	1.60 m	X	1.20 m
Kitchen	3.60 m	X	3.40 m
G. Bathroom	2.85 m	X	1.65 m
G. Bedroom	3.60 m	X	3.40 m
Toilet	1.65 m	X	1.20 m
Vanity	1.50 m	X	1.20 m
Laundry	1.40 m	X	1.25 m
Reception & Dining	11.45 m	X	5.35 m
Terrace	1.85 m	X	1.75 m
Terrace 01	3.35 m	X	2.45 m



Mountain view reserves the right to make minor alterations without prior notice. All numbers, renders, plans and visual materials, design, and facades are for demonstrative purposes and are subject to change

River Villa

TOTAL GROSS AREA | 400 SQM

5 Bedrooms

First Floor

M. Bedroom 01	3.60 m	X	3.50 m
M. Bathroom 01	2.65 m	X	1.65 m
Dressing 01	1.85 m	X	1.65 m
M. Bedroom 02	3.80 m	X	3.60 m
Dressing 02	1.85 m	X	1.65 m
M. Bathroom 02	2.65 m	X	1.65 m
M. Bedroom 03	3.85 m	X	3.50 m
M. Bathroom 03	2.55 m	X	1.65 m
Dressing 03	4.60 m	X	2.45 m
Bedroom 04	3.85 m	X	3.50 m
Bathroom 04	2.50 m	X	1.65 m
Staircase	6.75 m	X	2.45 m
Lobby 01	2.65 m	X	2.45 m
Lobby 02	2.05 m	X	1.55 m
Living Room	4.10 m	X	3.55 m



Mountain view reserves the right to make minor alterations without prior notice. All numbers, renders, plans and visual materials, design, and facades are for demonstrative purposes and are subject to change

River Villa

TOTAL GROSS AREA | 400 SQM

5 Bedrooms

Roof Floor

Living Room	4.50 m	X	3.80 m
Kitchenette	2.30 m	X	1.95 m
Toilet	1.95 m	X	1.55 m
Roof Terrace	11.45 m	X	12.90 m



Mountain view reserves the right to make minor alterations without prior notice. All numbers, renders, plans and visual materials, design, and facades are for demonstrative purposes and are subject to change



Mountain view reserves the right to make minor alterations without prior notice. All numbers, renders, plans and visual materials, design, and facades are for demonstrative purposes and are subject to change

River Villa

TOTAL GROSS AREA | 320 SQM

5 Bedrooms

Ground Floor

Lobby	2.95 m	X	1.70 m
Reception	7.40 m	X	3.95 m
Dining	5.60 m	X	3.40 m
Kitchen	4.85 m	X	3.65 m
Maid Bedroom	2.40 m	X	2.15 m
Maid Toilet	1.30 m	X	1.10 m
Powder Room	1.10 m	X	1.60 m
G. Bathroom	2.10 m	X	1.60 m
G. Bedroom	4.95 m	X	3.60 m
Terrace 01	6.10 m	X	1.70 m



Mountain view reserves the right to make minor alterations without prior notice. All numbers, renders, plans and visual materials, design, and facades are for demonstrative purposes and are subject to change

River Villa

TOTAL GROSS AREA | 320 SQM

5 Bedrooms

First Floor

M. Bedroom 01	4.05 m	X	3.70 m
M. Dressing 01	3.60 m	X	2.20 m
M. Bathroom 01	2.10 m	X	1.70 m
M. Bedroom 02	4.10 m	X	3.50 m
M. Dressing 02	3.30 m	X	1.60 m
M. Bathroom 02	3.30 m	X	1.80 m
Bedroom 03	3.60 m	X	5.15 m
Bedroom 04	3.95 m	X	3.60 m
Bathroom	2.10 m	X	1.60 m
Terrace 02	2.80 m	X	1.15 m
Terrace 03	5.40 m	X	1.55 m



Mountain view reserves the right to make minor alterations without prior notice. All numbers, renders, plans and visual materials, design, and facades are for demonstrative purposes and are subject to change

River Villa

TOTAL GROSS AREA | 320 SQM

5 Bedrooms

Roof Floor

Living Room	3.40 m	X	2.75 m
Kitchenette	1.60 m	X	1.20 m
Toilet	1.70 m	X	1.20 m
Roof Terrace 04	5.80 m	X	3.15 m
Roof Terrace 05	9.80 m	X	3.00 m



Mountain view reserves the right to make minor alterations without prior notice. All numbers, renders, plans and visual materials, design, and facades are for demonstrative purposes and are subject to change



Mountain view reserves the right to make minor alterations without prior notice. All numbers, renders, plans and visual materials, design, and facades are for demonstrative purposes and are subject to change

River Villa

TOTAL GROSS AREA | 255 SQM

3 Bedrooms

Ground Floor

Entrance	2.85 m	X	1.60 m
Reception & Dining	6.80 m	X	7.40 m
Kitchen	3.50 m	X	4.80 m
Guest Toilet	1.10 m	X	2.00 m
Maid's Room	2.00 m	X	2.00 m
Maid's Toilet	1.25 m	X	1.00 m
Stairs	3.70 m	X	2.50 m



Mountain view reserves the right to make minor alterations without prior notice. All numbers, renders, plans and visual materials, design, and facades are for demonstrative purposes and are subject to change

River Villa

TOTAL GROSS AREA | 255 SQM

3 Bedrooms

First Floor

Living Room	4.10 m	X	3.60 m
M. Bedroom	4.00 m	X	3.70 m
M. Dressing	1.80 m	X	2.30 m
M. Bathroom	1.90 m	X	2.40 m
Bath	1.85 m	X	2.40 m
Bedroom 01	3.60 m	X	3.70 m
Bedroom 02	3.60 m	X	3.70 m
Stairs	3.70 m	X	2.50 m
Terrace 01	1.60 m	X	3.50 m
Terrace 02	0.80 m	X	2.85 m



Mountain view reserves the right to make minor alterations without prior notice. All numbers, renders, plans and visual materials, design, and facades are for demonstrative purposes and are subject to change

River Villa

TOTAL GROSS AREA | 255 SQM

3 Bedrooms

Ground Floor

Stairs	3.40 m	X	2.50 m
Lobby	1.30 m	X	2.15 m
Laundry	1.10 m	X	2.45 m
Roof Terrace	57.35 SQM		



Mountain view reserves the right to make minor alterations without prior notice. All numbers, renders, plans and visual materials, design, and facades are for demonstrative purposes and are subject to change



Mountain view reserves the right to make minor alterations without prior notice. All numbers, renders, plans and visual materials, design, and facades are for demonstrative purposes and are subject to change

River Villa

TOTAL GROSS AREA | 210 SQM

3 Bedrooms

Ground Floor

Reception	5.40 m	X	4.60 m
Dining	4.45 m	X	3.35 m
Kitchen	3.60 m	X	4.55 m
Porch	3.25 m	X	1.15 m
Entrance	1.60 m	X	2.15 m
G. Toilet	1.70 m	X	1.55 m
Stairs	2.95 m	X	2.75 m



Mountain view reserves the right to make minor alterations without prior notice. All numbers, renders, plans and visual materials, design, and facades are for demonstrative purposes and are subject to change

River Villa

TOTAL GROSS AREA | 210 SQM

3 Bedrooms

First Floor

Bedroom 01	3.40 m	X	3.60 m
Bedroom 02	3.65 m	X	3.60 m
Terrace 01	1.85 m	X	1.05 m
Terrace 02	2.80 m	X	0.70 m
Terrace 03	2.20 m	X	0.80 m
Bath	2.40 m	X	1.90 m
M. Bedroom	4.60 m	X	3.60 m
M. Bathroom	1.75 m	X	2.45 m
M. Dressing	1.75 m	X	1.65 m



Mountain view reserves the right to make minor alterations without prior notice. All numbers, renders, plans and visual materials, design, and facades are for demonstrative purposes and are subject to change

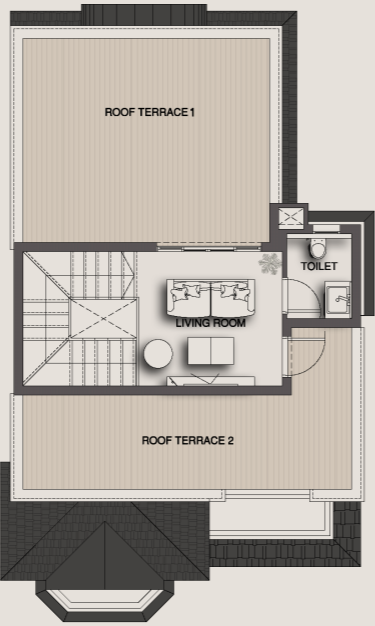
River Villa

TOTAL GROSS AREA | 210 SQM

3 Bedrooms

Roof Floor

Living Room	3.15 m	X	2.95 m
Toilet	1.85 m	X	1.40 m
Roof Terrace 01	4.50 m	X	5.45 m
Roof Terrace 02	2.10 m	X	7.25 m



Mountain view reserves the right to make minor alterations without prior notice. All numbers, renders, plans and visual materials, design, and facades are for demonstrative purposes and are subject to change



Mountain view reserves the right to make minor alterations without prior notice. All numbers, renders, plans and visual materials, design, and facades are for demonstrative purposes and are subject to change

River Villa

TOTAL GROSS AREA | 175 SQM

3 Bedrooms

Ground Floor

Reception	5.40 m	X	3.85 m
Dining	4.45 m	X	3.35 m
Kitchen	3.60 m	X	4.55 m
Porch	3.25 m	X	1.15 m
Entrance	1.60 m	X	2.15 m
G. Toilet	1.70 m	X	1.55 m
Stairs	2.95 m	X	2.75 m



Mountain view reserves the right to make minor alterations without prior notice. All numbers, renders, plans and visual materials, design, and facades are for demonstrative purposes and are subject to change

River Villa

TOTAL GROSS AREA | 175 SQM

3 Bedrooms

First Floor

Bedroom 01	3.40 m	X	3.60 m
Bedroom 02	3.65 m	X	3.60 m
Terrace 01	1.85 m	X	1.05 m
Terrace 02	2.80 m	X	0.80 m
Terrace 03	2.20 m	X	0.80 m
Bath	2.40 m	X	1.90 m
M. Bedroom	3.90 m	X	3.60 m
M. Bathroom	1.75 m	X	2.00 m
M. Dressing	1.75 m	X	1.50 m



Mountain view reserves the right to make minor alterations without prior notice. All numbers, renders, plans and visual materials, design, and facades are for demonstrative purposes and are subject to change

River Twins



Mountain view reserves the right to make minor alterations without prior notice. All numbers, renders, plans and visual materials, design, and facades are for demonstrative purposes and are subject to change

River Twin

TOTAL GROSS AREA | 180 SQM

3 Bedrooms

Ground Floor

Reception	5.40 m	X	4.55 m
Dining	4.45 m	X	3.95 m
Kitchen	3.60 m	X	4.65 m
Porch	3.25 m	X	1.15 m
Entrance	1.60 m	X	2.15 m
G. Toilet	1.70 m	X	1.55 m
Stairs	2.95 m	X	2.75 m



Mountain view reserves the right to make minor alterations without prior notice. All numbers, renders, plans and visual materials, design, and facades are for demonstrative purposes and are subject to change

River Twin

TOTAL GROSS AREA | 180 SQM

3 Bedrooms

First Floor

Bedroom 01	3.40 m	X	3.60 m
Bedroom 02	3.65 m	X	3.60 m
Terrace 01	1.85 m	X	1.05 m
Terrace 02	2.85 m	X	0.70 m
Terrace 03	2.20 m	X	0.80 m
Bath	2.40 m	X	1.75 m
M. Bedroom	4.60 m	X	3.60 m
M. Bathroom	1.70 m	X	2.45 m
M. Dressing	1.70 m	X	1.65 m



Mountain view reserves the right to make minor alterations without prior notice. All numbers, renders, plans and visual materials, design, and facades are for demonstrative purposes and are subject to change

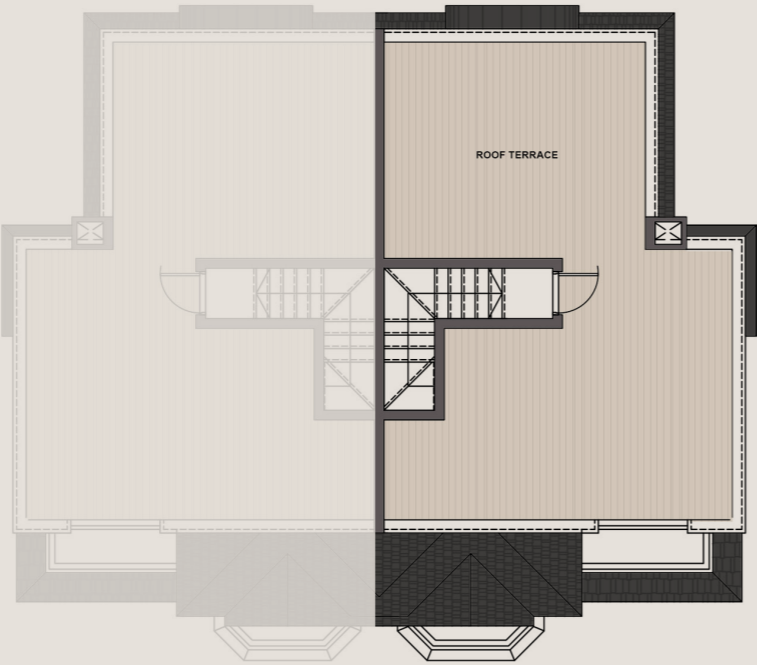
River Twin

TOTAL GROSS AREA | 180 SQM

3 Bedrooms

Roof Floor

Roof Terrace 9.90 m X 7.20 m



Mountain view reserves the right to make minor alterations without prior notice. All numbers, renders, plans and visual materials, design, and facades are for demonstrative purposes and are subject to change



Mountain view reserves the right to make minor alterations without prior notice. All numbers, renders, plans and visual materials, design, and facades are for demonstrative purposes and are subject to change

River Town



Mountain view reserves the right to make minor alterations without prior notice. All numbers, renders, plans and visual materials, design, and facades are for demonstrative purposes and are subject to change.

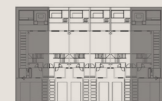
River Town Corner

TOTAL GROSS AREA | 165 SQM

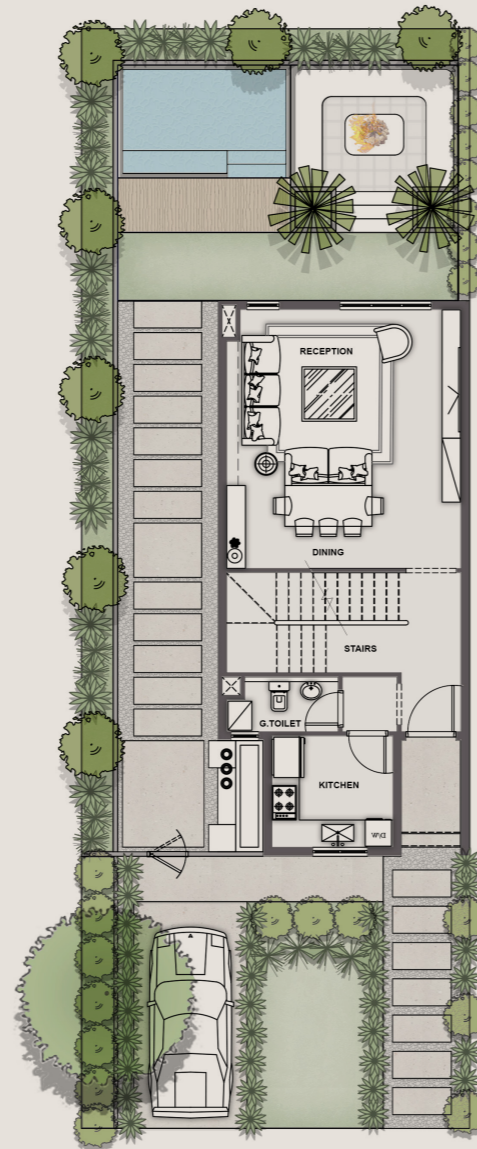
3 Bedrooms

Ground Floor

Kitchen	2.65 m	X	2.45 m
G. Toilet	2.45 m	X	1.20 m
Stairs	3.85 m	X	2.20 m
Reception & Dining	5.15 m	X	5.70 m



Mountain view reserves the right to make minor alterations without prior notice. All numbers, renders, plans and visual materials, design, and facades are for demonstrative purposes and are subject to change



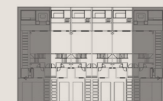
River Town Corner

TOTAL GROSS AREA | 165 SQM

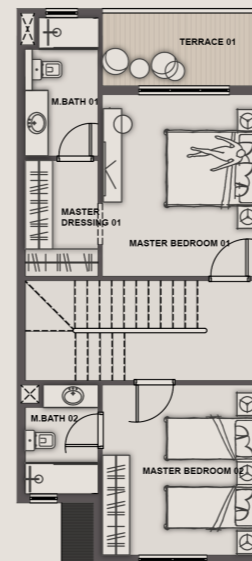
3 Bedrooms

First Floor

M. Bedroom 01	4.00 m	X	3.45 m
M. Bathroom 01	3.05 m	X	1.60 m
Dressing 01	2.55 m	X	1.60 m
M. Bedroom 02	3.75 m	X	3.45 m
M. Bathroom 02	2.40 m	X	1.60 m
Terrace	3.45 m	X	1.60 m



Mountain view reserves the right to make minor alterations without prior notice. All numbers, renders, plans and visual materials, design, and facades are for demonstrative purposes and are subject to change



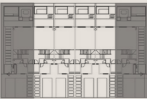
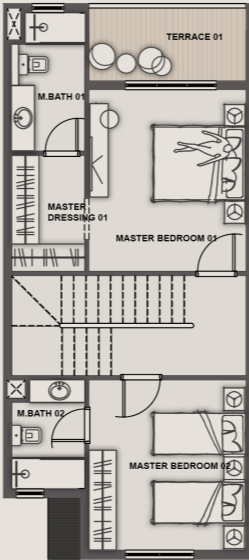
River Town Corner

TOTAL GROSS AREA | 165 SQM

3 Bedrooms

Roof Floor

M. Bedroom 03	3.55 m	X	3.45 m
M. Bathroom 03	2.40 m	X	1.60 m
Roof Terrace	5.80 m	X	5.15 m



Mountain view reserves the right to make minor alterations without prior notice. All numbers, renders, plans and visual materials, design, and facades are for demonstrative purposes and are subject to change



Mountain view reserves the right to make minor alterations without prior notice. All numbers, renders, plans and visual materials, design, and facades are for demonstrative purposes and are subject to change

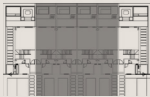
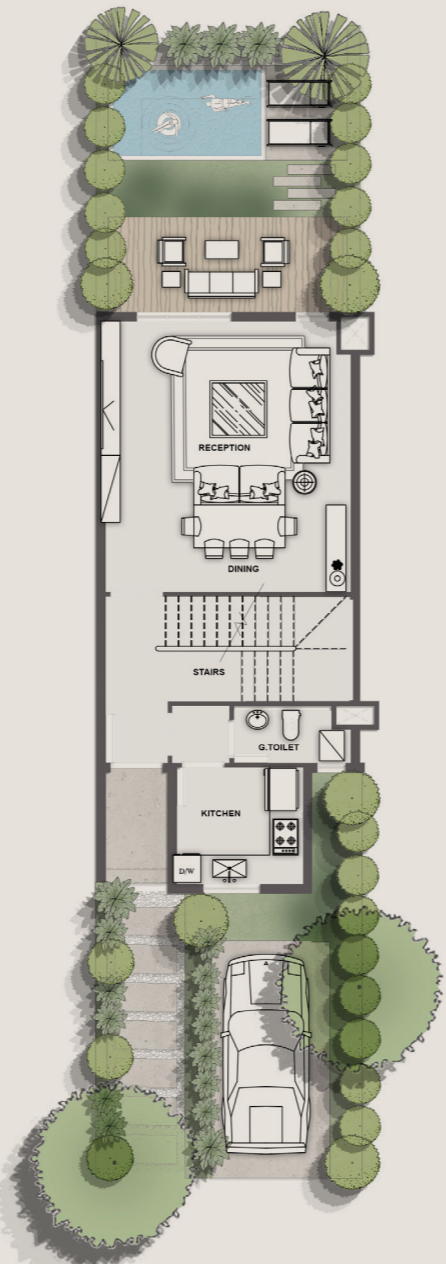
River Town Middle

TOTAL GROSS AREA | 165 SQM

3 Bedrooms

Ground Floor

Kitchen	2.65 m	X	2.45 m
G. Toilet	2.45 m	X	1.20 m
Stairs	3.85 m	X	2.20 m
Reception & Dinning	5.15 m	X	5.70 m



Mountain view reserves the right to make minor alterations without prior notice. All numbers, renders, plans and visual materials, design, and facades are for demonstrative purposes and are subject to change

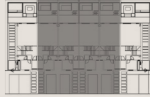
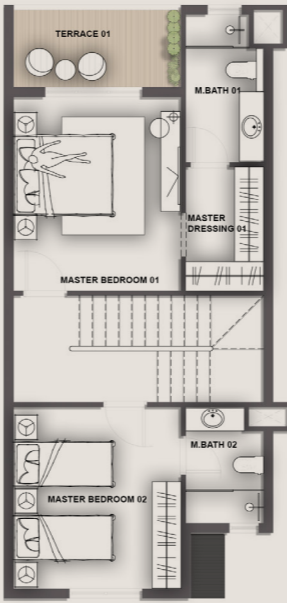
River Town Middle

TOTAL GROSS AREA | 165 SQM

3 Bedrooms

First Floor

M. Bedroom 01	4.00 m	X	3.45 m
M. Bathroom 01	3.05 m	X	1.60 m
Dressing 01	2.55 m	X	1.60 m
M. Bedroom 02	3.75 m	X	3.45 m
M. Bathroom 02	2.40 m	X	1.60 m
Terrace	3.45 m	X	1.60 m



Mountain view reserves the right to make minor alterations without prior notice. All numbers, renders, plans and visual materials, design, and facades are for demonstrative purposes and are subject to change

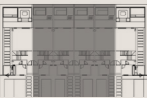
River Town Middle

TOTAL GROSS AREA | 165 SQM

3 Bedrooms

Roof Floor

M. Bedroom 01	3.55 m	X	3.45 m
M. Bathroom 01	2.40 m	X	1.60 m
Roof Terrace	5.80 m	X	5.15 m



Mountain view reserves the right to make minor alterations without prior notice. All numbers, renders, plans and visual materials, design, and facades are for demonstrative purposes and are subject to change



Mountain view reserves the right to make minor alterations without prior notice. All numbers, renders, plans and visual materials, design, and facades are for demonstrative purposes and are subject to change



SALES OFFICES

New Cairo, Building 183, Sector 2, 5th Settlement
Capital Business Park Building B4-3rd Floor, 6th of October
city Arkan Mall, 6th of October City Building No.6, 4th Floor.

16201
mountainviewegypt.com